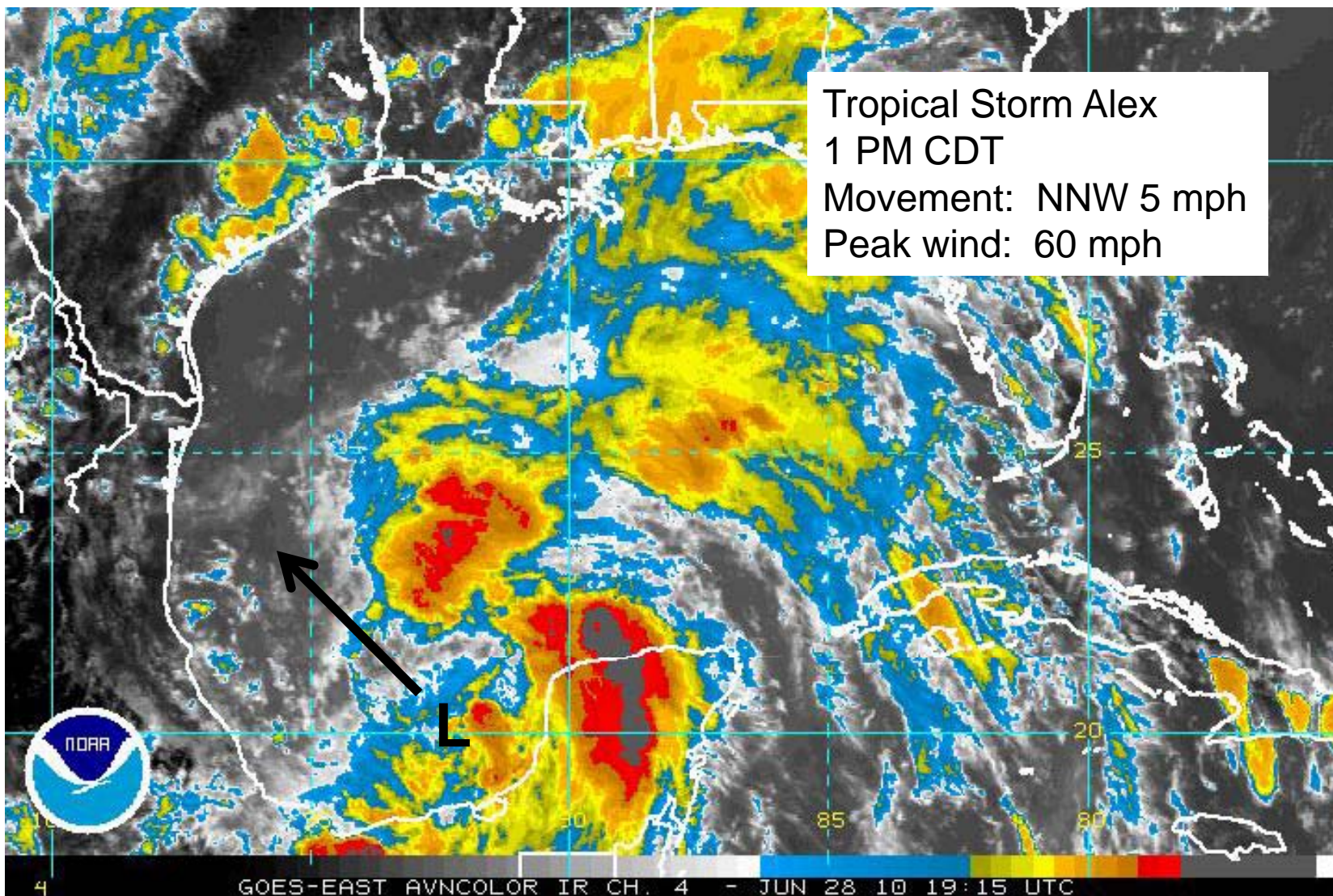


National Weather Service Southern Region Regional Operations Center

Texas DEM Weather Briefing

Monday, June 28, 2010, 430 PM

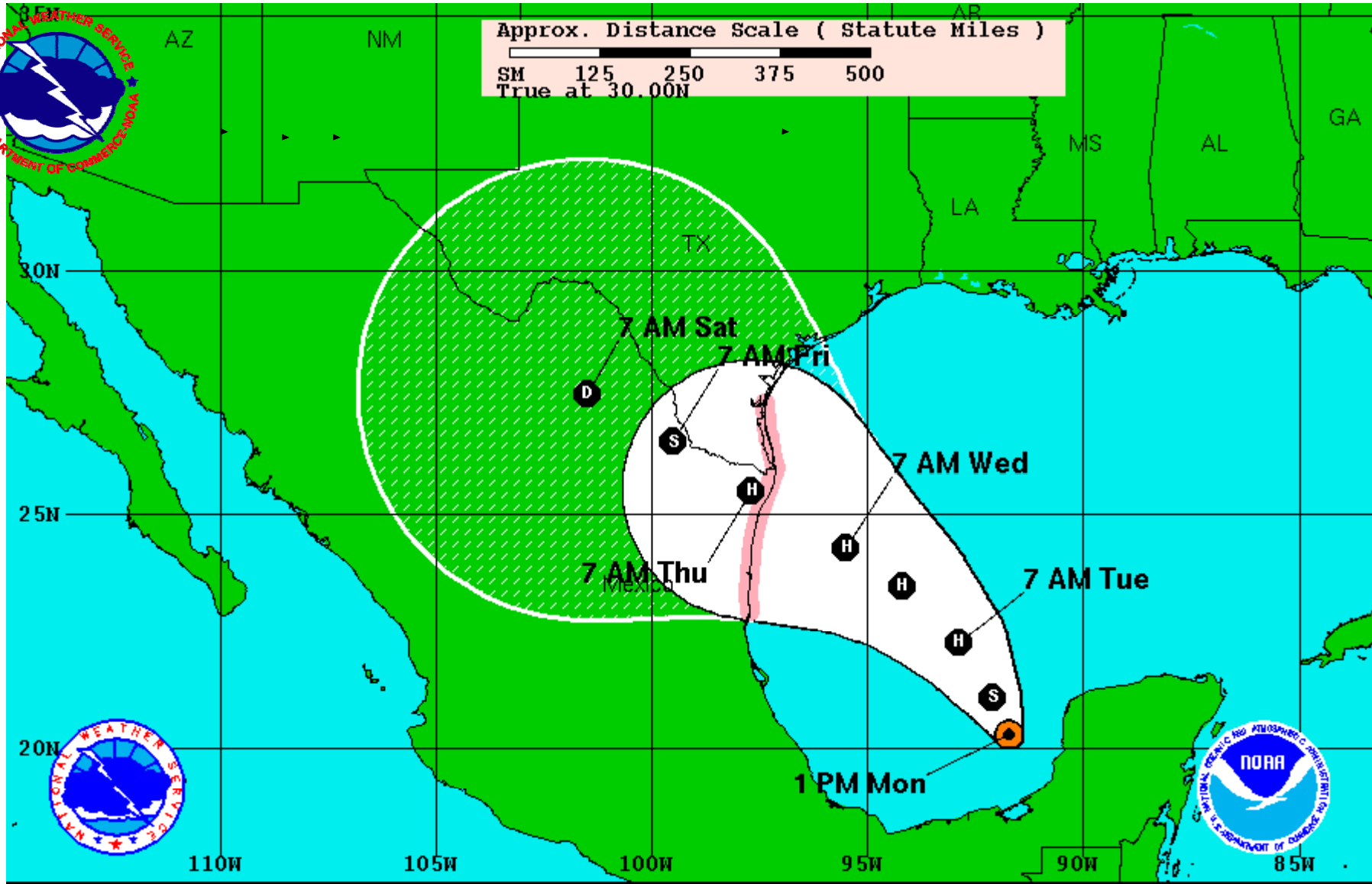
Tom Bradshaw
ROC Duty Officer





Approx. Distance Scale (Statute Miles)

SM 125 250 375 500
True at 30.00N



Tropical Storm Alex

Monday June 28, 2010

1 PM CDT Intermediate Advisory 12A

NWS TPC/National Hurricane Center

Current Information:

Center Location 20.3 N 91.7 W
Max Sustained Wind 60 mph
Movement NNW at 5 mph

Forecast Positions:

● Tropical Cyclone ○ Post-Tropical
Sustained Winds: D < 39 mph
S 39-73 mph H 74-110 mph M > 110mph

Potential Track Area:

▧ Day 1-3 ▨ Day 4-5

Watches:

▨ Hurricane ▨ Trop.Storm

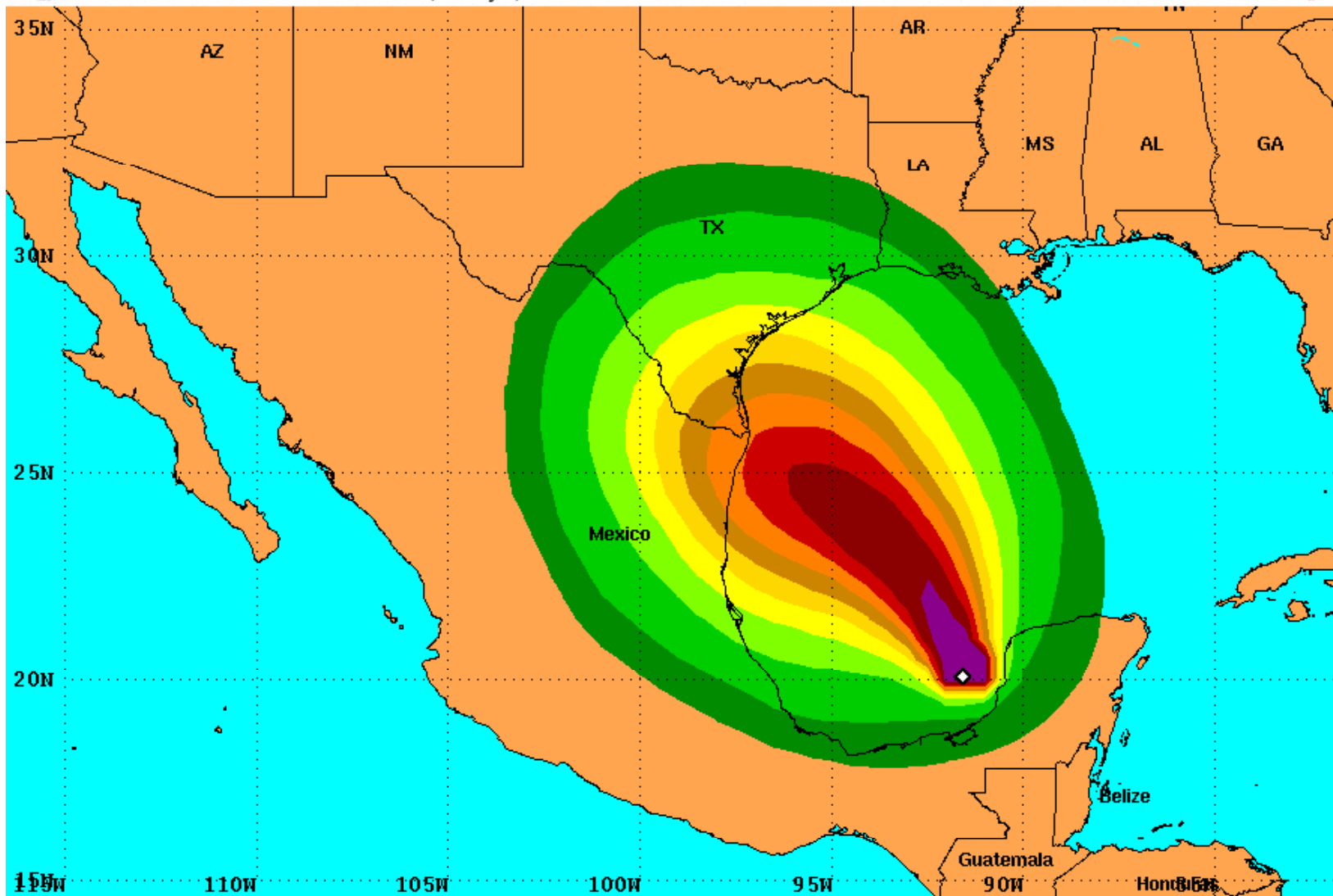
Warnings:

▨ Hurricane ▨ Trop.Storm



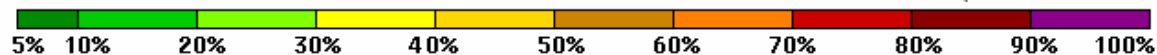
PRELIMINARY (SINGLE STORM) Tropical Storm Force Wind Speed Probabilities

For the 120 hours (5 days) from 7 AM CDT Mon Jun 28 to 7 AM CDT Sat Jul 3



Probability of sustained tropical storm force surface winds (1-minute average of 39 mph or greater)

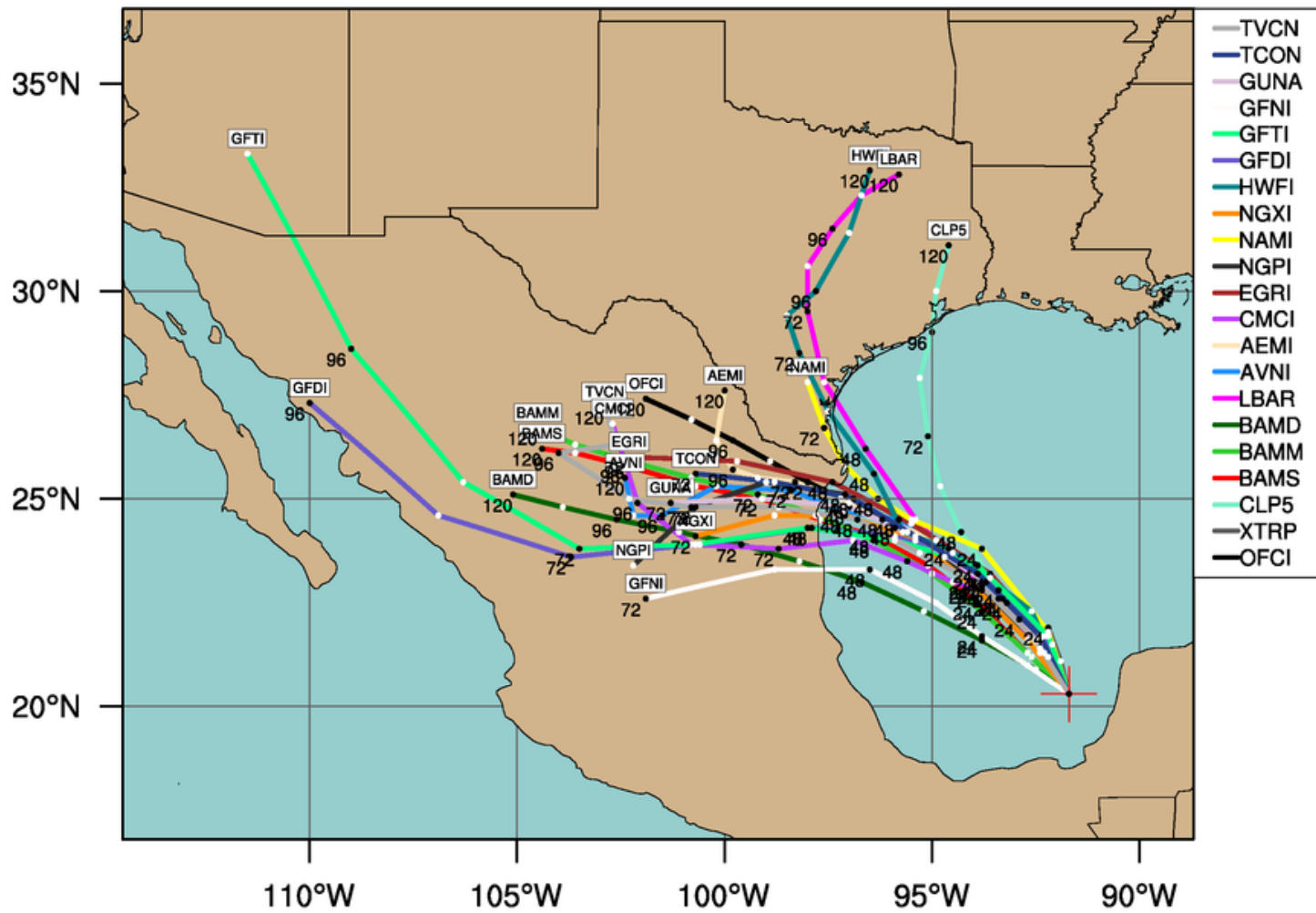
◆ indicates TROPICAL STORM ALEX center location at 7 AM CDT Mon Jun 28 2010 (Forecast/Advisory #12)





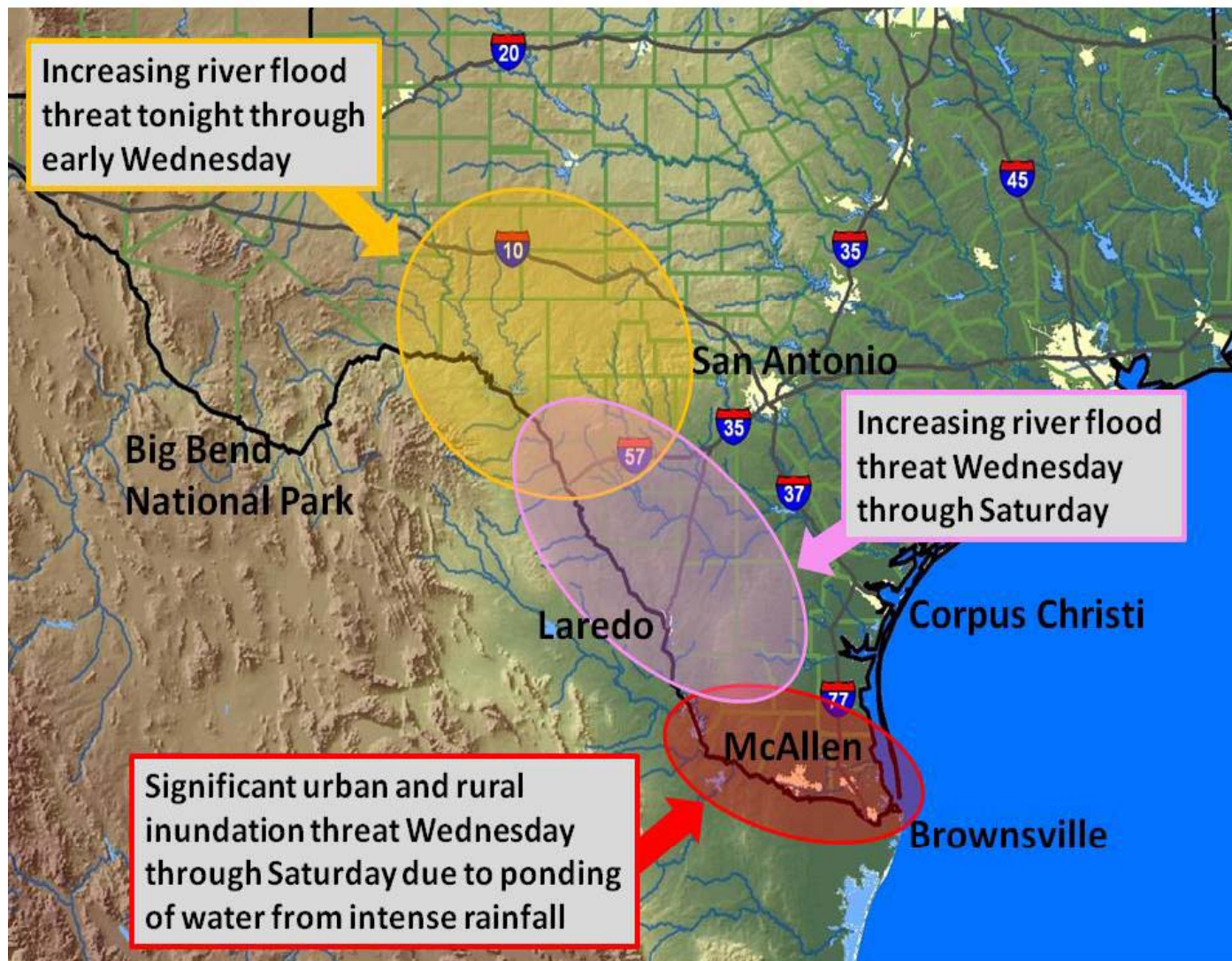
Current Intensity: 50 kt

Current Basin: North Atlantic



This plot does not display official storm information. Use for information purposes only.
DO NOT USE FOR LIFE AND DEATH DECISIONS!

Rainfall/Flood Impacts





- Location/Timing:
 - Tropical Storm Alex is in Bay of Campeche, moving northwest.
 - Alex will strengthen to hurricane status over warm Gulf waters within next 12-18 hours.
 - Still some uncertainty on track and speed of Alex beyond Tuesday, but guidance starting to come better in line
 - Storm most likely to make landfall on extreme NE Mexican coast – approx 100 miles S of Brownsville – by late afternoon Wednesday.
 - Uncertainty cone still includes much of extreme S Texas, and a landfall somewhat farther north – perhaps to mouth of Rio Grande - is still possibility



- Texas Impacts:
 - Depending on track, greatest threat would be heavy rainfall and flash flooding over S TX from early Wed through Fri. 7"-12" totals possible.
 - Strong tropical storm force winds – and isolated hurricane force winds - along extreme S TX coast by Noon Wed into Thurs.
 - Coastal flooding possible along S TX coast – 6'-8' on beaches; possibly 12' at the Jetty to S Padre Island

Bottom Line:

Alex will produce adverse impacts to S Texas, starting Wed. Heavy rainfall and flooding is likely over the Deep South TX, with coastal flooding. Now a chance of hurricane force conditions at least near the Mouth of Rio Grande